

9
Let it dissolve for 10 minutes at room temperature, shaking it gently every 2 minutes.

C- Final suspension



10
You have a suspension with the specified microorganism indicated on the enclosed Analysis Report.

11
This suspension is stable within 8 hours while kept refrigerated.



ielab
Pol. Ind. Las Atalayas
C/ Dracma, 7
03114 Alicante (Spain)
T +34 966 10 55 01
comercial@ielab.es
www.ielab.es

BACuali

qualitative reference material

USER GUIDE

A- Reception and storage



1
Check the correct reception of the reference material:
- that it contains dry ice
- that the bag is sealed
- that the Analysis Report is included

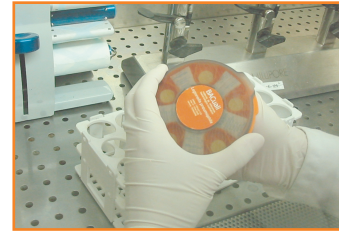


2
Keep it in the freezer at $-20 \pm 5^{\circ}\text{C}$

B- Preparation



3
Open the aluminium bag by the marked line.



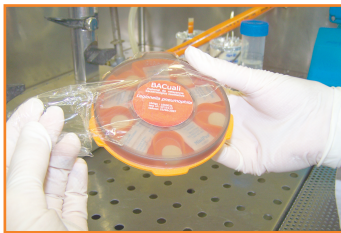
6
Turn the lid following the direction of the arrow until the opening matches with one tablet.



4
Remove the tablet dispenser from the bag under aseptic conditions.



7
Dispense the tablet into a sterile tube, containing 20 mL of sterile distilled water.



5
Remove the security wrapping.



8
Introduce the tablet dispenser into the bag again and store it in the freezer.

2

3